



The Great Hall

Technical Specification

Please ensure that the relevant pages of this document are sent to your production staff, at the earliest opportunity – failure to do so may result in your company incurring unnecessary costs.

VENUE CAPACITY

539 for a full auditorium seated event and 390 in reduced seating format.
These capacities MUST include the guest list.

DRESSING ROOMS

All dressing rooms have 2 Toilets and 1 Shower Room .

Room Number	Usual Capacity	Facilities
Ground Floor Dressing Room	10	Toilets x 2 & Shower
First Floor Dressing Room	10	Toilets x 2 & Shower
Green Room	30	Various soft seating
Total Capacity	50	

For Further information contact: Jack Ring, Venue Manager.
Tel: 01227 763231 Ext:3068 jringl@kentcollege.co.uk
<https://kentcollege.com/venue-hire>

Prices quoted are valid for events between September 2024 and August 2025. Events after this time are subject to price increases.



WARDROBE

- 1 x steam iron and ironing board.

STAGE EQUIPMENT

Flying

- House tabs, Red Velour, Rope Operated from DSL.
- 8 Single- line “**hempex**” hand rope sets direct pull, using grade one manila 18mm rope, with cleat rail on SL fly floor (*30kg max evenly distributed*)
- 1 Tabs track - (30kg SWL)
- 9 x IWB lighting bars on Electric Motor Control. SWL 500kg each on bar excluding Bars 3 & 6
- Bar 3 - Projection Screen Fixed to Bar MS - Non-Removable

Stage

- The stage is wooden, NO screwing into the stage floor.
- Stage rake is Flat.
- 10 stage weights, square.

A small stock of sundries, such as screws, bolts etc. are available; consumables used and any equipment borrowed and not returned, will be recharged to the Visiting Manager.

Get-in

The Stage Door and Loading Bay are located to the rear of the building. All company and crew members must access the building via the Stage Door.

The Load-in is at the side of the building and can accommodate vehicles up to 40 ft in length. The doors lead straight into the Scene Store at the Rear of the Stage.

Our Loading Bay door measurements are: Width: 1.9m x Height: 2.35m.

For Further information contact: Jack Ring, Venue Manager.

Tel: 01227 763231 Ext:3068 jring1@kentcollege.co.uk

<https://kentcollege.com/venue-hire>

Prices quoted are valid for events between September 2024 and August 2025. Events after this time are subject to price increases.



MASKING

- 5x Black wool serge borders approx 1.5m drop x 11m wide please note 3 of these are directly downstage of LX bars
- 1x Black wool cloth 11m wide x 7m drop - This Cloth can be moved but a £20 + VAT recharge will be incurred.

DECK

- 20x CPS QuickStage 6ft x 3ft
- 80 x 2 ft Legs
- 2 x Treads

ACCESS EQUIPMENT

- 1x 14 rung Zarges 3 section ladder

POWER

- 1x 63A 1 phase supply - Backstage Corridor SR Side **Ceeform**
- NOTE: Touring PA normally Ground stacked.
- Touring companies must supply distro. None at the venue.

COMMUNICATION

- Headset system - 6 Wired Comms Packs
- Backstage show call/relay: Loudspeakers *outside* all dressing rooms.

OTHER

- 1x Yamaha C5 (cost is incurred for re-tuning)

DANCE FLOOR

6m wide x 3m deep

For Further information contact: Jack Ring, Venue Manager.

Tel: 01227 763231 Ext:3068 jringl@kentcollege.co.uk

<https://kentcollege.com/venue-hire>

Prices quoted are valid for events between September 2024 and August 2025. Events after this time are subject to price increases.



LIGHTING EQUIPMENT

Control: Zero88 FLX24

Dimmers: 6x Zero88 Chili 24 Dimmers 2kw/10amp per channel fixed hard wired.

Luminaries:

- 16 x ETC Source 4
- 10x Chauvet Colorado Solo 3
- 4x Chauvet Ovation C-805FC
- 6x Cantana 1kw

FOH PA

- 4 x Turbosound NUQ-102an
- 2 x Turbosound Active Wedge Monitors - **Please request in advance.**

SOUND EQUIPMENT

- 1x Allen & Heath SQ7
- 1x Denon Blu-Ray Player
- 1x Apple Mac
- 2x Tall boom stands
- 1x 16in/8out Allen & Heath AB168 Stagebox - Positioned DSR
- 2 x Shure SM58 Lead Mics

INCLUDED IN HIRE

- 1 x Technician for duration of hire
- 2 x Bar staff for Performances
- 1 x Parking attendant

AVAILABLE TO HIRE

- 2x Sennheiser G4 Handhelds

For Further information contact: Jack Ring, Venue Manager.

Tel: 01227 763231 Ext:3068 jring1@kentcollege.co.uk

<https://kentcollege.com/venue-hire>

Prices quoted are valid for events between September 2024 and August 2025. Events after this time are subject to price increases.



IMPORTANT VENUE POLICIES

FOOD & DRINK

Please do not bring chewing gum into the Theatre.
Red Wine is not permitted inside the Auditorium.

ACCESS

Please ask any visitors to go to the stage door, where a pass will be provided to the company on arrival.

PERFORMANCES & REHEARSALS

Anyone wishing to see a performance from FOH must first obtain a valid ticket, either directly from the box office or via the visiting company's manager.
Members of a visiting company, who wish to watch rehearsals, may do so from the balcony area only – the rest of the public areas are closed.

CHILDREN

All children must be under constant adult supervision, either by parents or by local authority approved chaperones. **NO ALCOHOL IS PERMITTED BACKSTAGE WHEN CHILDREN ARE PRESENT.**

SAFETY

A Theatre Risk assessment and safety and evacuation information are available on request. The visiting manager is responsible for the safety and safe use of their equipment in the theatre. The visiting manager is responsible for any accidents or injuries arising from the removal or alteration of any safety device.

For Further information contact: Jack Ring, Venue Manager.
Tel: 01227 763231 Ext:3068 jringl@kentcollege.co.uk
<https://kentcollege.com/venue-hire>

Prices quoted are valid for events between September 2024 and August 2025. Events after this time are subject to price increases.



EQUIPMENT

Theatre equipment is available for use by visiting companies in its supplied condition – it should not be misused, cut, altered or otherwise modified. Please report any damaged or unserviceable equipment to the Venue Manager or their deputies.

ELECTRICITY

Unauthorized persons must not open, tamper with or attempt to repair, modify or otherwise interfere with any electrical equipment. Connection of equipment to the theatres electrical system (other by means of a plug and socket) must be carried out by the Venue only.

DAMAGE

All charges for repairs to the theatre property damaged by the visiting manager's employees, agents, and associates, will be recharged to the visiting manager.

PYROTECHNICS, SMOKE, FLAMES & LASERS

We require at least 48 hours' notice of the proposed use of smoke, dry ice and haze.

We require 6 weeks' notice for any of the following effects:

Cigars, cigarettes candles, naked flame , matches, pyrotechnics and lasers.

Pyrotechnics of any description or lasers shall not be used or introduced until a formal request has been submitted and accepted, to include:

- Full risk assessment
- Pyrotechnic technical information sheet for each type used
- Method of ignition i.e. igniter UN No 0454. These require .5 amps which require a branded control box.
- Technical information sheet from the fireproofing product(s) used on your set

For Further information contact: Jack Ring, Venue Manager.

Tel: 01227 763231 Ext:3068 jringl@kentcollege.co.uk

<https://kentcollege.com/venue-hire>

Prices quoted are valid for events between September 2024 and August 2025. Events after this time are subject to price increases.



All Hot Pyrotechnics, flames etc. must be set within safety distances designated by the Pyrotechnics manufacturer.

Once this has been accepted all pyrotechnics shall be safely stored below sub-stage in the Theatre's dedicated store (or suitable safe area) and each pyrotechnic used shall be signed out before use.

Please note the Licensing Authorities word is final.

For Further information contact: Jack Ring, Venue Manager.
Tel: 01227 763231 Ext:3068 jringl@kentcollege.co.uk
<https://kentcollege.com/venue-hire>

Prices quoted are valid for events between September 2024 and August 2025. Events after this time are subject to price increases.



KENT COLLEGE
CANTERBURY

LOADING



STAGE DIMENSIONS

Proscenium Height	5.7m
Stage Width	10m
Stage Depth	10m
Height above auditorium floor	0.9m
Stage to grid	8m
Get-In Door Width	1.9m
Get-In Door Height	2.35m
Get-In Height off Ground	0m

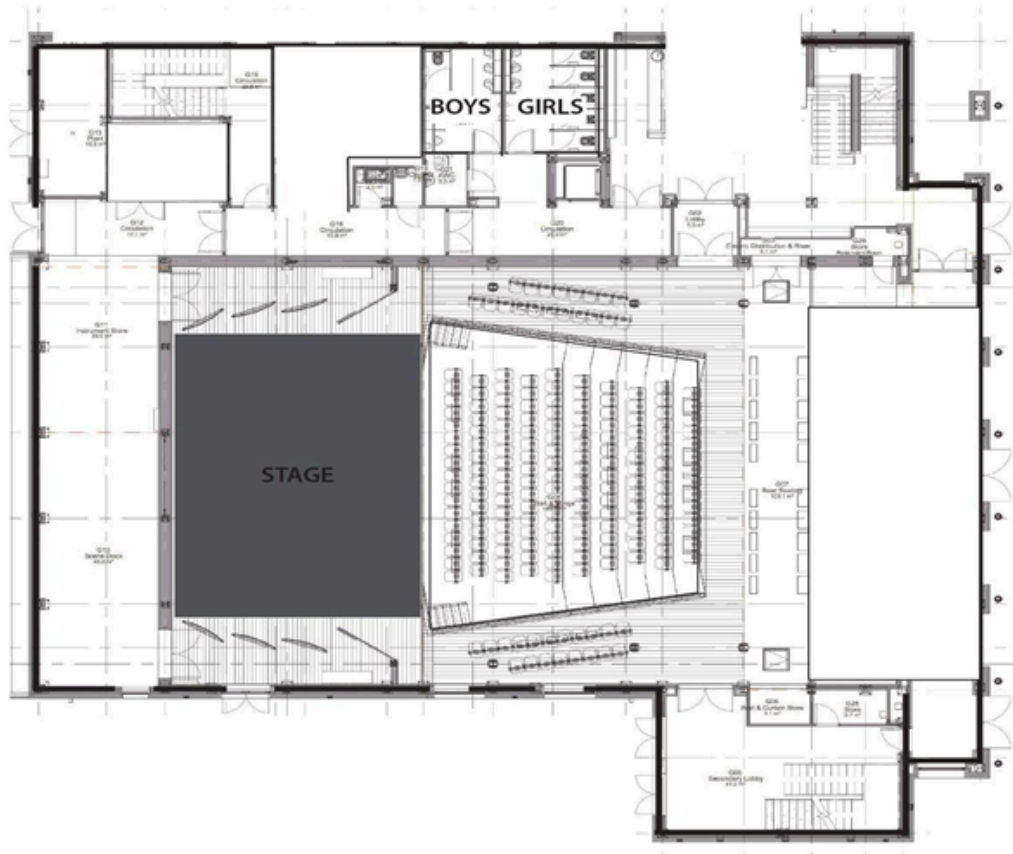
For Further information contact: Jack Ring, Venue Manager.
Tel: 01227 763231 Ext:3068 jringl@kentcollege.co.uk
<https://kentcollege.com/venue-hire>

Prices quoted are valid for events between September 2024 and August 2025. Events after this time are subject to price increases.



KENT COLLEGE
CANTERBURY

GREAT HALL - GROUND FLOOR



For Further information contact: Jack Ring, Venue Manager.

Tel: 01227 763231 Ext:3068 jringl@kentcollege.co.uk

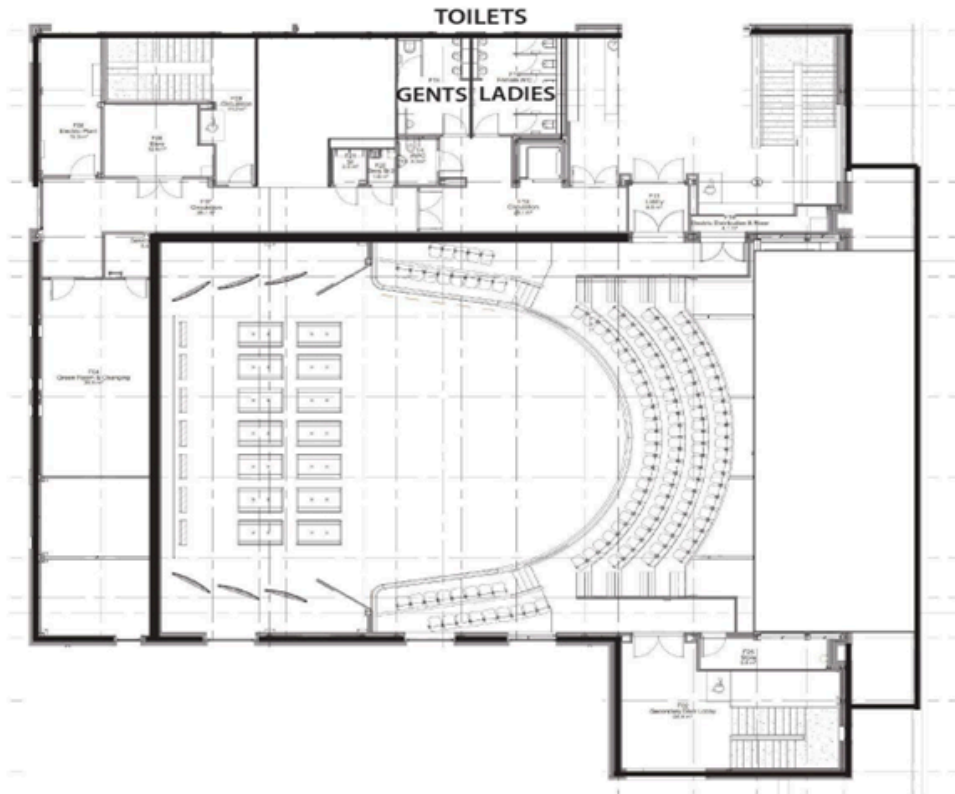
<https://kentcollege.com/venue-hire>

Prices quoted are valid for events between September 2024 and August 2025. Events after this time are subject to price increases.



KENT COLLEGE
CANTERBURY

GREAT HALL - FIRST FLOOR



For Further information contact: Jack Ring, Venue Manager.

Tel: 01227 763231 Ext:3068 jringl@kentcollege.co.uk

<https://kentcollege.com/venue-hire>

Prices quoted are valid for events between September 2024 and August 2025. Events after this time are subject to price increases.



KENT COLLEGE
CANTERBURY

ADDRESS:	Great Hall, Kent College, Whitstable Rd, Canterbury, Kent, CT2 9DT
TELEPHONE:	01227 763231 ext. 3608 - Venue Manager
CONTACT:	Jack Ring - jring@kentcollege.co.uk
Rate Card as of September 2024	
PRS	4.2% of every ticket sold
Local crew	£20.00ph (ex VAT) - if required
SIA Security	£24 pph (ex VAT) - 1 to 100 Ratio (1 to 200 seated)
Rigger	(production to supply)
Piano tuning	£75.00 + VAT
Towels (laundry)	£1.00per item (ex VAT) - if required (£15 for any losses)
Merchandise	15% commission

For Further information contact: Jack Ring, Venue Manager.

Tel: 01227 763231 Ext:3068 jringl@kentcollege.co.uk

<https://kentcollege.com/venue-hire>

Prices quoted are valid for events between September 2024 and August 2025. Events after this time are subject to price increases.



FIRE

On arrival you will be briefed on our Fire Procedures and will be given a full walk around of the building to highlight all fire exits, extinguishers, call points and evacuation notices.

A complete Risk assessment and related information is available here.

Smoking Fine	£1500 smoking fine if an artist or any member of the production team are found smoking or vaping on or backstage.
---------------------	---

For Further information contact: Jack Ring, Venue Manager.
Tel: 01227 763231 Ext:3068 jringl@kentcollege.co.uk
<https://kentcollege.com/venue-hire>

Prices quoted are valid for events between September 2024 and August 2025. Events after this time are subject to price increases.